

HARDCAP™ AEROLITE™

TECHNICAL SPECIFICATION

HEAD PROTECTION

THE LIGHTEST FULL SHELL BUMPCAP TO MEET AND EXCEED EN812:2012

INSTRUCTIONS FOR USE

Fit Scalp Protector on head and fasten strap to ensure correct fit
 For adequate protection this cap must be worn with the peak facing forward and adjusted to the size of the user's head
 Do not use in an environment where an Industrial Safety Helmet is required

HARDCAP™ AEROLITE™ PERFORMANCE

Designed as a safeguard to accidental bumping/scraping of the head
 Passing and exceeding the required impact tests of EN812:2012
 Fully adjustable to allow the perfect fit
 Full HDPE Shell and lightweight impact EPP liner
 Available in a range of colours
 The Aerolite™ is compatible with JSP's 2 point chinstrap (EN812 compliant)
 Company personalisation available by heat transfer

SWEAT BAND:
Sweatband treated with Polygiene®

IMPACT LINER:
Expanded Polypropylene

COMFORT PAD:
Brushed Nylon and Foam

UNIQUE ADJUSTER:
Unique one handed angled adjuster, giving a true 'one size fits all' Sizing ranges from 53cm to 64cm headsize



CAP:
Sleek Polyester cover

ALL ROUND PROTECTION:

The protective liner is removable, so the outer cap is fully washable for good hygiene and extended life cycle



CLEANING & MAINTENANCE

The liner may be cleaned with soap and warm water and dried with a soft cloth
 Chemical or abrasive cleaners should not be used
 The standard cover can be brushed clean
 The standard cover can be machine washed at 30°C
 The Aerolite™ should be stored out of direct sunlight, away from chemicals and not exposed to extremes of temperature



CONFORMITY

Conforms to EN812:2012 - including Amendment A1:2012



MANUFACTURING FOR SAFETY
WWW.JSP.CO.UK

UKSALES@JSP.CO.UK
 TEL: +44 (0)1993 826050



HARDCAP™ AEROLITE™

**TECHNICAL
SPECIFICATION**

HEAD PROTECTION

THE LIGHTEST FULL SHELL BUMPCAP TO MEET AND EXCEED EN812:2012



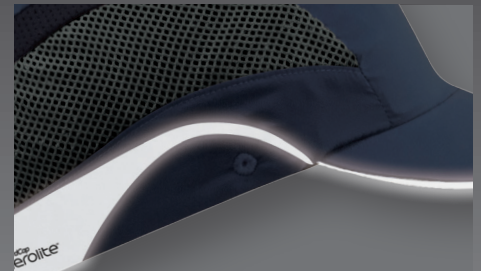
✓ PEAK OPTIONS

Available with either a 50mm or 25mm peak. The longer peak provides better shade and the shorter peak provides improved vision when looking upward.



✓ 'AIR FLOW' TECHNOLOGY

The cover has large open woven panels allowing the easy transfer of cool air. This substantially reduces heat build-up and discomfort for the wearer, especially when worn over long periods.



✓ REFLECTIVE

Large reflective areas on the side panels of the cover and reflective piping around the peak provide extra visibility and improved safety in low-light conditions.

COLOURS AVAILABLE



DIMENSIONS OF OUTER PACKAGING

Width 510 - Length 190 - Height 420 (mm)

Gross Weight: 3.5kg (Approx.)

Quantity: 20

LIMITATIONS OF USE

The cap is not designed to protect the wearer from falling objects

Protection will only be offered if the cap is fitted correctly

Any cap subjected to severe bump should be replaced immediately

Do not apply paint, solvents, adhesives or self-adhesive labels, except in accordance with instructions from the manufacturer

The attention of users is also drawn to the dangers of modifying or removing any of the original component parts, other than as recommended by the manufacturer

The liner, when in contact with the skin may cause allergic reactions to susceptible individuals*

*If this occurs, leave the hazard area, remove the cap and seek medical advice

HARDCAP™ AEROLITE™ FEATURES

**STANDARDS, TESTING
& PERFORMANCE**

EN812 ✓

Impact Resistance ✓ 4 x 12 Joules

All round protection ✓

+50°C ✓

-40°C ✓

HardCap
aerolite™



MANUFACTURING FOR SAFETY
WWW.JSP.CO.UK

UKSALES@JSP.CO.UK
TEL: +44 (0)1993 826050



Issued 29/11/18 V3